



Parkways Avenue | Oulton | LS26 8TW

£260,000

Three bedroom semi-detached | Council Tax Band C | EPC Rating TBC

Emsleys | estate agents

WELL PRESENTED. THREE LARGE BEDROOMS. MODERN FITTED KITCHEN/DINER. CLOSE TO AMENITIES.

Nestled in the charming area of Oulton, this delightful semi-detached house presents an excellent opportunity for families and professionals alike. With three well-proportioned bedrooms, this property offers ample space for comfortable living. The inviting open plan kitchen and dining area is perfect for entertaining guests or enjoying family meals, featuring a modern fitted kitchen that is both stylish and functional.

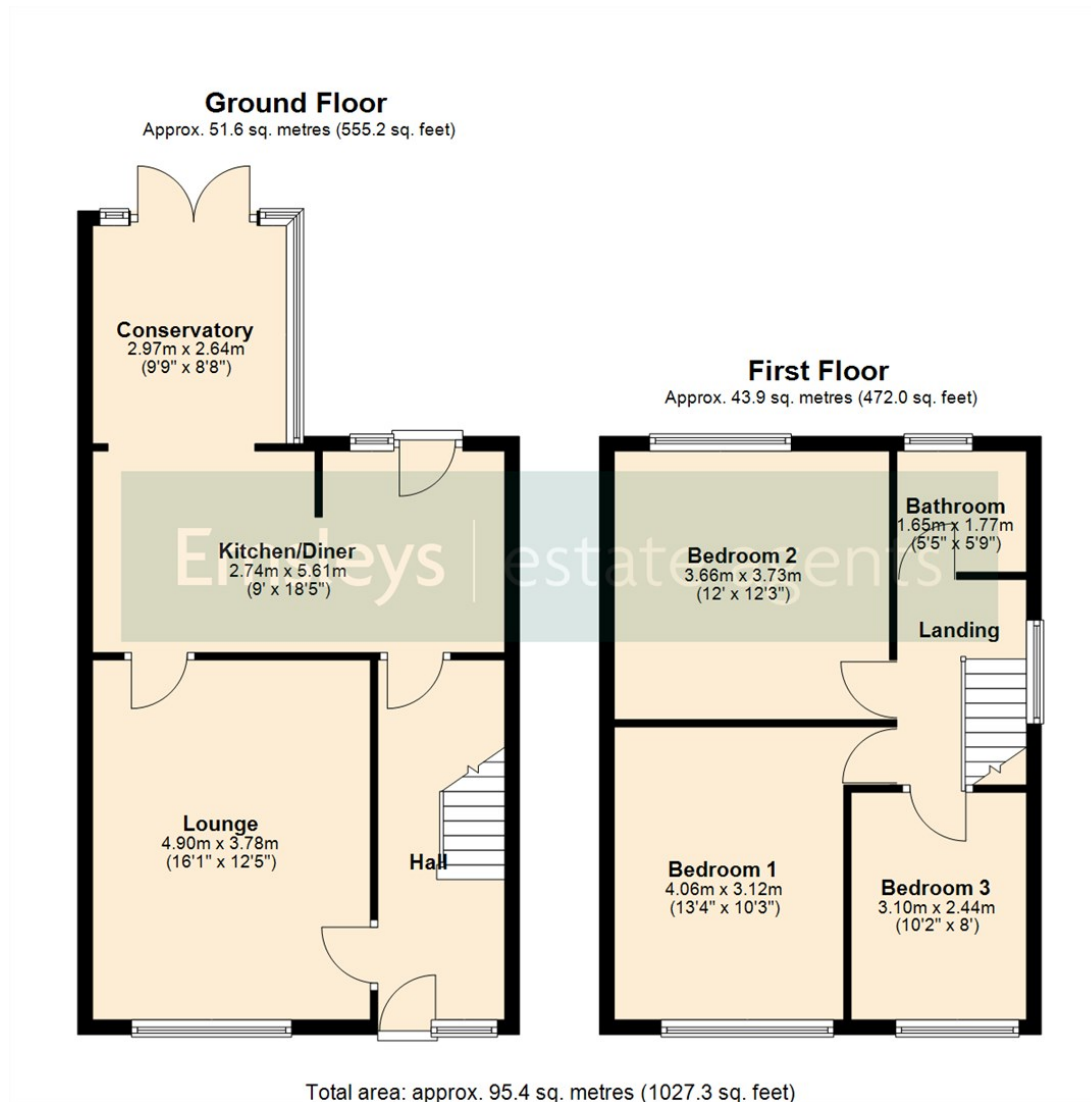
The property boasts two reception rooms, providing versatility for various uses with the conservatory off the dining area enhancing the living space, allowing for an abundance of natural light and a lovely view of the garden, making it an ideal spot to relax or unwind.

For those with vehicles, the property includes parking for up to three vehicles, along with a single garage, ensuring convenience and security. The well-maintained exterior and surrounding area add to the overall appeal of this home.

With its prime location in Oulton, residents can enjoy a peaceful neighbourhood while still being within easy reach of local amenities, schools, and transport links. This semi-detached house is a wonderful blend of comfort and practicality, making it a perfect choice for anyone looking to settle in this desirable part of Leeds.







These details are for guidance only and complete accuracy cannot be guaranteed. If there is any point, which is of particular importance, verification should be obtained. They do not constitute a contract or part of a contract. All measurements are approximate. No guarantee can be given with regard to planning permissions or fitness for purpose. No apparatus, equipment, fixture or fitting has been tested. Items shown in photographs are NOT necessarily included. Interested Parties are advised to check availability and make an appointment to view before travelling to see a property.



65 Commercial Street | Rothwell | Leeds | LS26 0QD

t: 0113 201 4040 www.emsleysestateagents.co.uk

Emsleys | estate agents